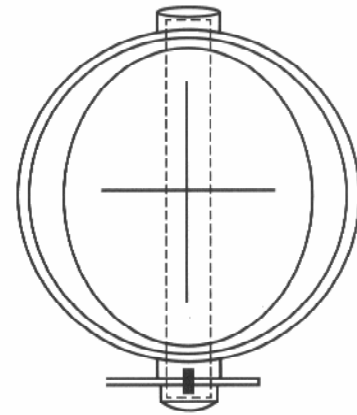
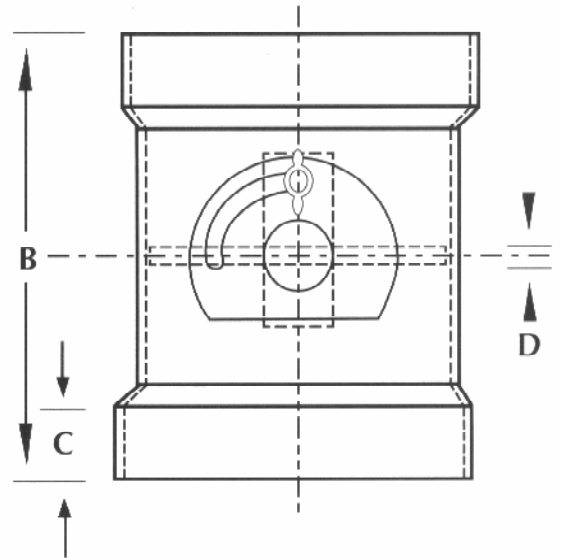
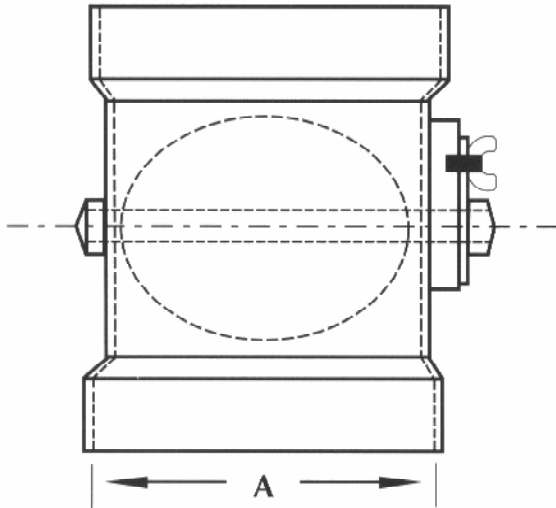




ADJUSTABLE DAMPERS



FEATURES AND BENEFITS

- Materials of construction:
Body, damper plate and shaft: made of PVC (other materials by special quote only) Locking hardware is stainless steel
- All plastic internal parts
- Optional electric motor actuated (special quote only)
- Furnished with locking quadrant damper allowing for permanent position set
- Allows for less than 5% air-flow restriction
- Offers an approximate 95% seal
- Optional positive seal shaft & damper plate (special quote only)
- 90° damper plate operation
- Can be installed either vertically or horizontally

DIMENSIONAL DATA						
	AD04	AD06	AD08	AD10	AD12	AD14
SIZE	4"	6"	8"	10"	12"	14"
D	.188	.188	.188	.188	.188	.188
C	2	2.25	2.5	2.5	2.75	2.75
B	8.5	9.5	10.5	11.75	12.75	13.75
A	4.5	6.625	8.625	10.75	12.75	14